



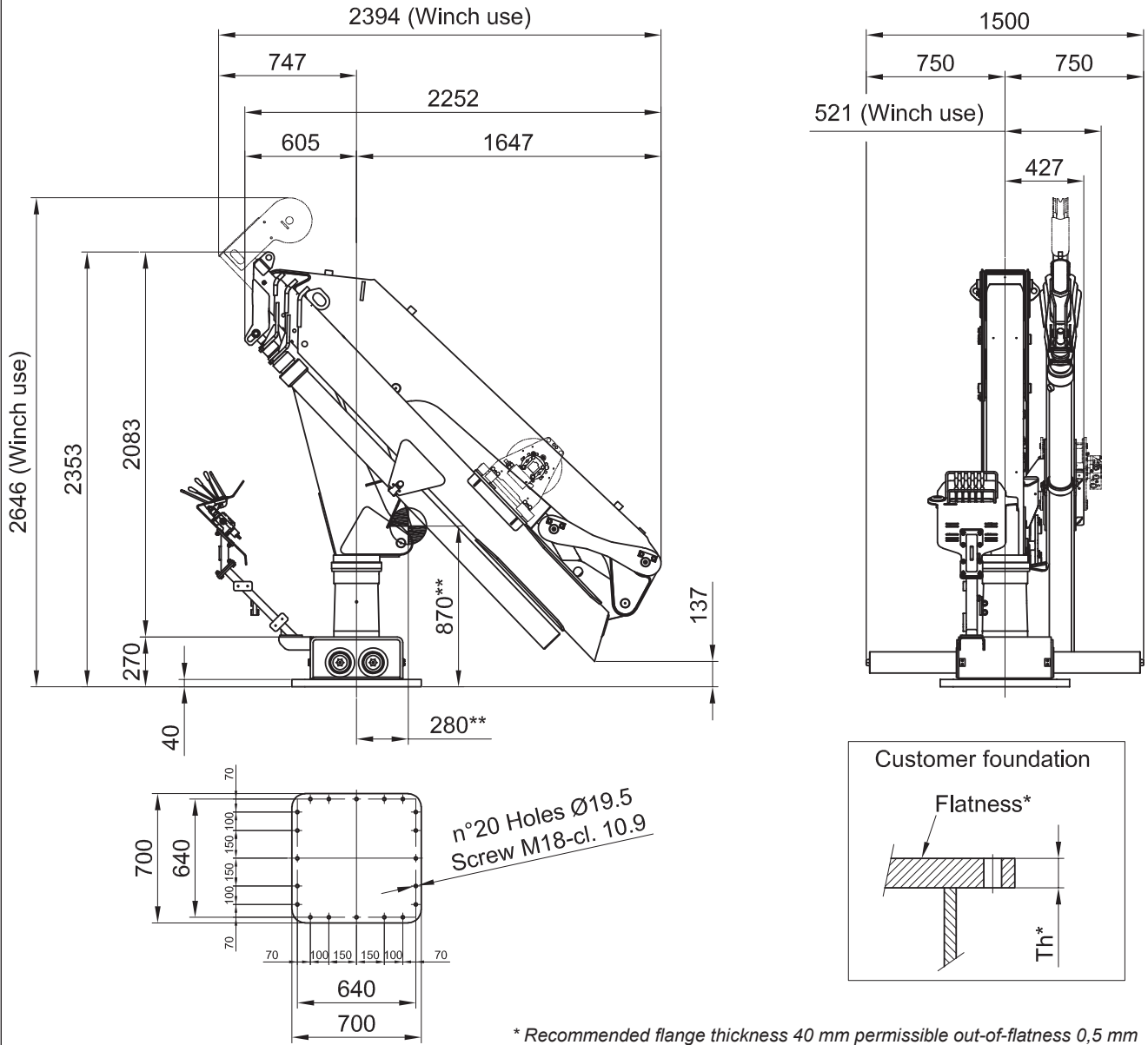
Custom Built Marine & Offshore Cranes

FOLDABLE CRANE

HLM 10-3S MODEL

Parking Position | Overall Dimensions

[mm]



* Recommended flange thickness 40 mm permissible out-of-flatness 0,5 mm
 ** COG referred to hook operation

TECHNICAL DATA	Max dynamic crane moment	kN•m	151	Slewing speed	rpm	1
	Max axial force	kN	57	1st Boom lifting time	s	27
	Slewing torque	kN•m	13	2nd Boom lifting time	s	28
	Max. slewing angle	°	380	Telescopic extension time	s	72
	Pump oil flow	l/min	30			
	Max. working pressure	bar	260			
	Recommended oil quantity	l	100	1 ton winch hoisting speed ***	m/min	28
	Crane weight hook use	kg	1710	1,5 ton winch hoisting speed ***	m/min	22
	Operating temperature -20°C / +45°C			*** At 2nd layer and 1 movement at the time		

[1 kN = 0,225 kip | 1 kN•m = 0,737 kip•ft]

Technical data are indicative and may change without notice, production tolerance have to be taken in to account.

2019 March | 861202-00



Custom Built Marine & Offshore Cranes

FOLDABLE CRANE

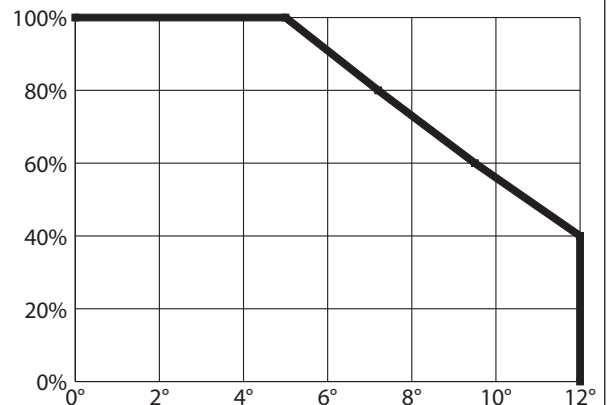
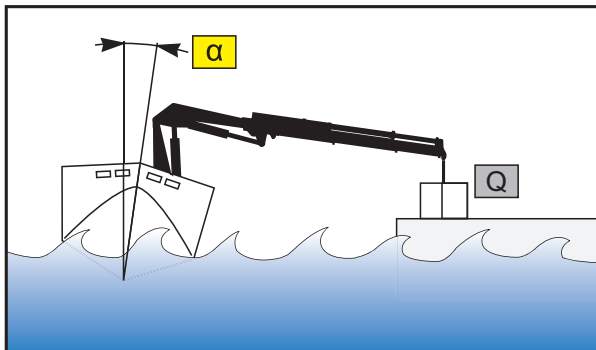
HLM 10-3S MODEL

Specifications

STANDARD FEATURES	Heila "BASIC" electrical and automation system	Painting cycle according to ISO EN UNI 12944-5 class C5M-HD
	Mechanical and structural design in compliance with IACS class requirements	Crane standard color: RAL 1005 (any other RAL free of charge)
	Base mounted control console	Moment limiting device
	Control valve block (suitable for fix displacement pump)	Dead man control levers
	DIN 2353 hydraulic fittings	Emergency stop button
	Hydraulic pipes in stainless steel (AISI 316L)	Load holding valves
	Hydraulic fittings galvanized (packed in self-vulcanizing rubber tape)	Non structural bolts stainless steel A4-70
	Mineral oil type with ISO VG 46 grade	
	Luffing & boom cylinder rods treatment: Ni+Cr (30+20 µm)	
	Telescopic cylinder rods treatment: Cr+Cr (40+40 µm)	

AVAILABLE OPTIONS	Stand-alone operator control	Size 3 hydraulic power unit (15 kW)
	Stand-alone operator control provided with stainless steel cover	Centralized greasing system (manual or automatic)
	Proportional control valve block	Sea state selections
	SAE J 514 hydraulic fittings	Load indication system
	Stainless steel hydraulic fittings	Heel indication & Limitation device
	Auxiliary hydraulic activation at the last telescopic element for additional tool	Man-riding/Personnel lift
	Luffing & boom cylinder rods treatment: HD4+	Pedestal/Basement
	NORSOK M-501 painting cycle	Winterisation for operating up to T -40°C
	Steel structures anti-corrosion treatment: flame metalizing	IACS Certifications
	1 ton winch with 35 m length Ø 10 mm rope	Designed for hazardous (classified) location ATEX
	1,5 ton winch with 35 m length Ø 10 mm rope	-
	Winch load limiting device	Electrical and automation systems available:
	Winch constant tension system	Heila "EASY" including fail-safe system
	Integrated pulley holding head	Heila "PROFI" PLC global control
	Rotating pulley holding head	Full geometrical control
	Winch double fall configurations	
	Radio remote control	
	Cable remote control	
	Swiveling led floodlights	
	Hydraulic emergency stop	

MAXIMUM STATIC ANGLE HEEL / TRIM



Technical data are indicative and may change without notice, production tolerance have to be taken in to account. 2019 March | 861202-00



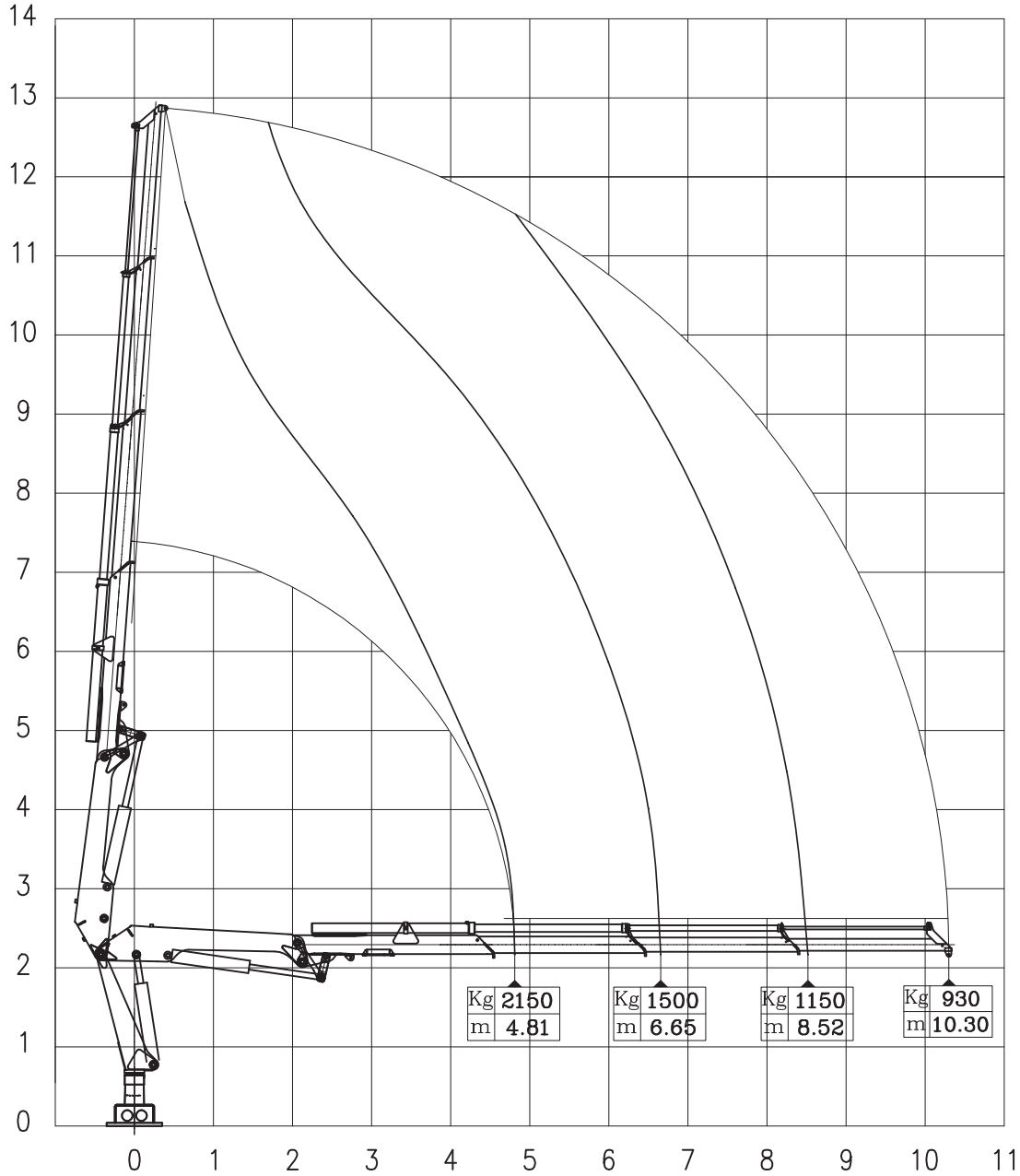
Custom Built Marine & Offshore Cranes

FOLDABLE CRANE

HLM 10-3S MODEL

Lifting capacity diagram | With HOOK

Load diagram referred to crane used in harbour condition, according to DIN 15018 (hoisting class H1 and loading group B3)



Capacities down grade in offshore use	OPERATIONAL CONDITIONS	Rules	Significant wave height Hw (m)	Hw	Radius (m)						Standard hoisting speed m/min.	
					4,81	6,65	8,52	10,30	-	-		-
					SWL (kg)							
OFFSHORE	ONBOARD	BV NR 526	0,6	-	1610	1200	920	740	-	-	-	-
		BV NR 526	1,1		1395	1125	860	695	-	-	-	-
		BV NR 526	1,6		1180	975	745	600	-	-	-	-
	OFFBOARD	BV NR 526	0,6		1505	1125	860	695	-	-	-	-
		BV NR 526	1,1		1180	900	690	555	-	-	-	-
		BV NR 526	1,6		965	825	630	510	-	-	-	-
-	-	-	-	-	-	-	-	-	-	-	-	

Technical data are indicative and may change without notice, production tolerance have to be taken in to account. 2019 March | 861202-00



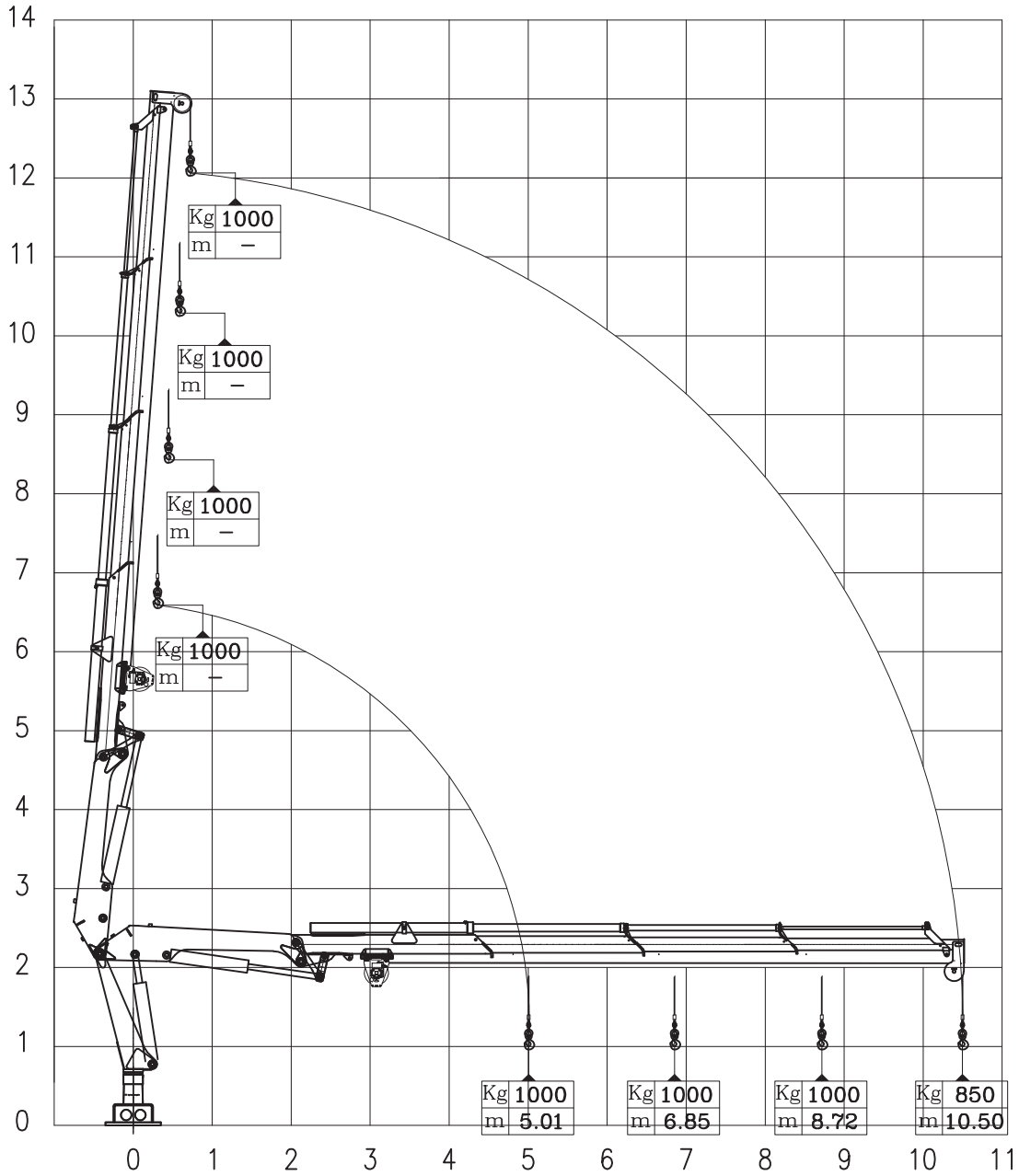
Custom Built Marine & Offshore Cranes

FOLDABLE CRANE

HLM 10-3S MODEL

Lifting capacity diagram | With 1 ton WINCH and pulley head

Load diagram referred to crane used in harbour condition, according to DIN 15018 (hoisting class H1 and loading group B3)



OPERATIONAL CONDITIONS	Rules	Significant wave height Hw (m)	Hw	Radius (m)							Standard hoisting speed m/min.
				5,01	6,85	8,72	10,50	-	-	-	
				SWL (kg)							
OFFSHORE	ONBOARD	BV NR 526	0,6	750	800	800	680	-	-	-	-
		BV NR 526	1,1	650	750	750	635	-	-	-	-
		BV NR 526	1,6	550	650	650	550	-	-	-	-
	OFFBOARD	BV NR 526	0,6	700	750	750	635	-	-	-	-
		BV NR 526	1,1	550	600	600	510	-	-	-	-
		BV NR 526	1,6	450	550	550	465	-	-	-	-
-	-	-	-	-	-	-	-	-	-	-	

Technical data are indicative and may change without notice, production tolerance have to be taken in to account. 2019 March | 861202-00



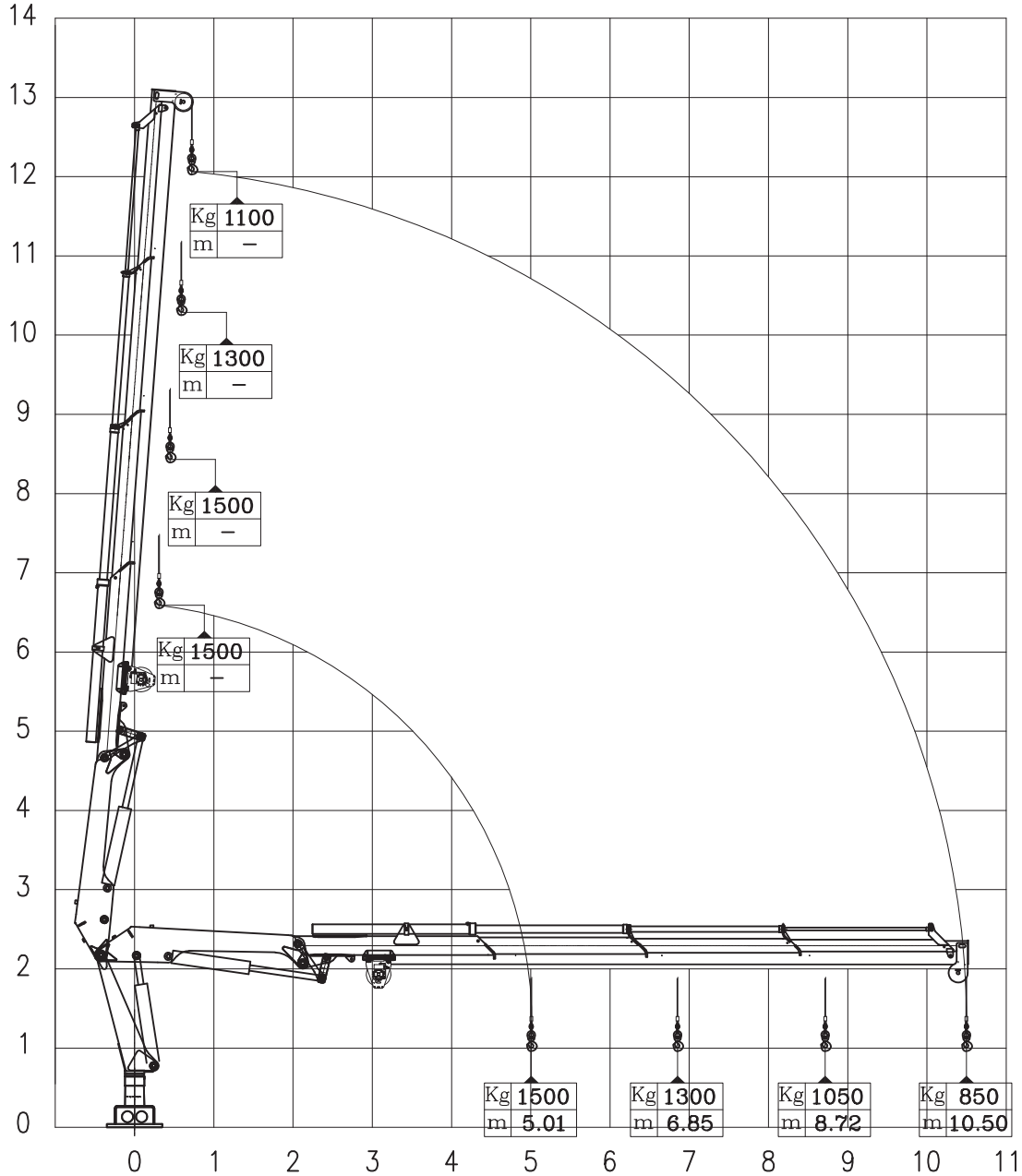
Custom Built Marine & Offshore Cranes

FOLDABLE CRANE

HLM 10-3S MODEL

Lifting capacity diagram | With 1,5 ton WINCH and pulley head

Load diagram referred to crane used in harbour condition, according to DIN 15018 (hoisting class H1 and loading group B3)



OPERATIONAL CONDITIONS	Rules	Significant wave height Hw (m)	Hw	Radius (m)							Standard hoisting speed m/min.
				5,01	6,85	8,72	10,50	-	-	-	
				SWL (kg)							
OFFSHORE	ONBOARD	BV NR 526	0,6	1125	1040	840	680	-	-	-	-
		BV NR 526	1,1	975	975	785	635	-	-	-	-
		BV NR 526	1,6	825	845	680	550	-	-	-	-
		-	-	-	-	-	-	-	-	-	-
	OFFBOARD	BV NR 526	0,6	1050	975	785	635	-	-	-	-
		BV NR 526	1,1	825	780	630	510	-	-	-	-
		BV NR 526	1,6	675	715	575	465	-	-	-	-
		-	-	-	-	-	-	-	-	-	-

Technical data are indicative and may change without notice, production tolerance have to be taken in to account.

2019 March | 861202-00

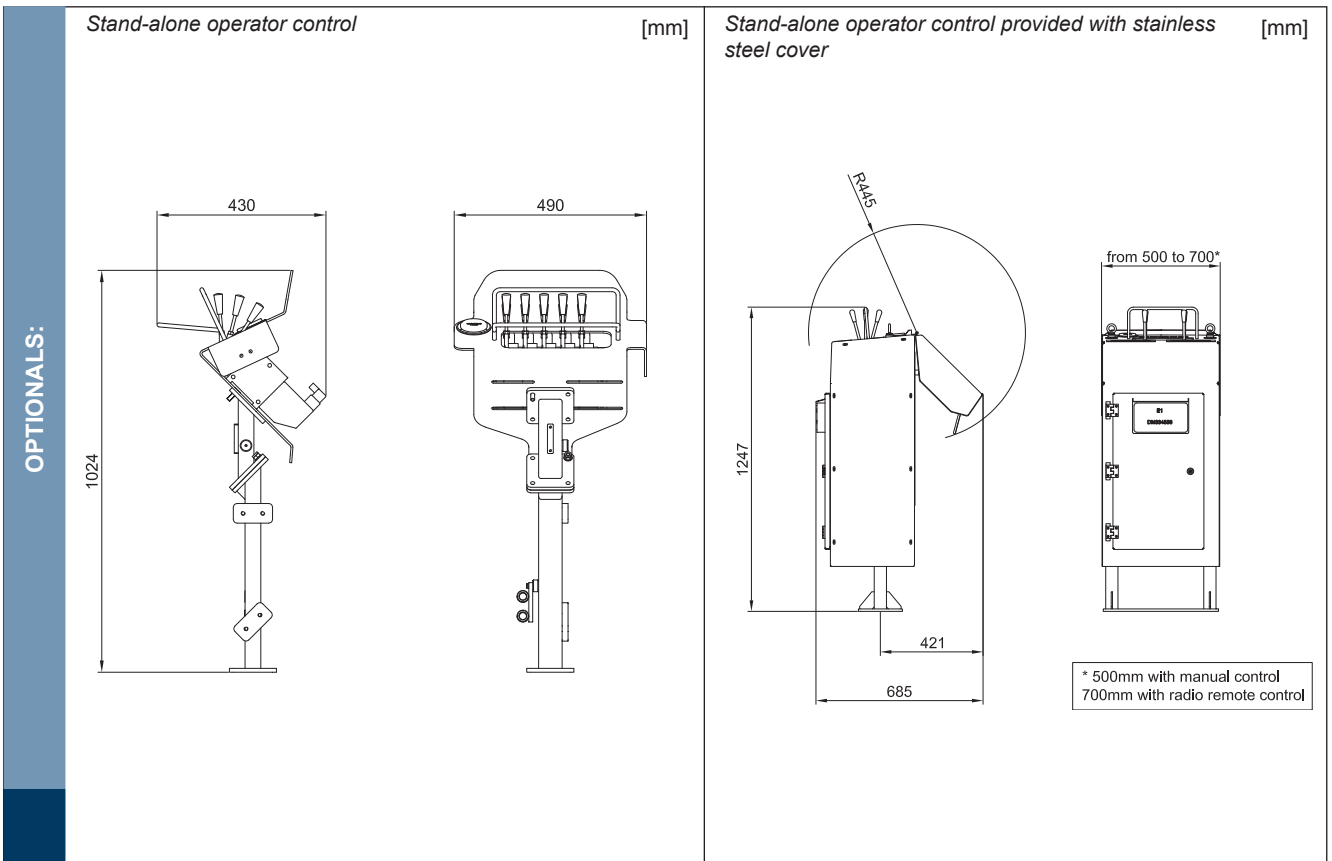
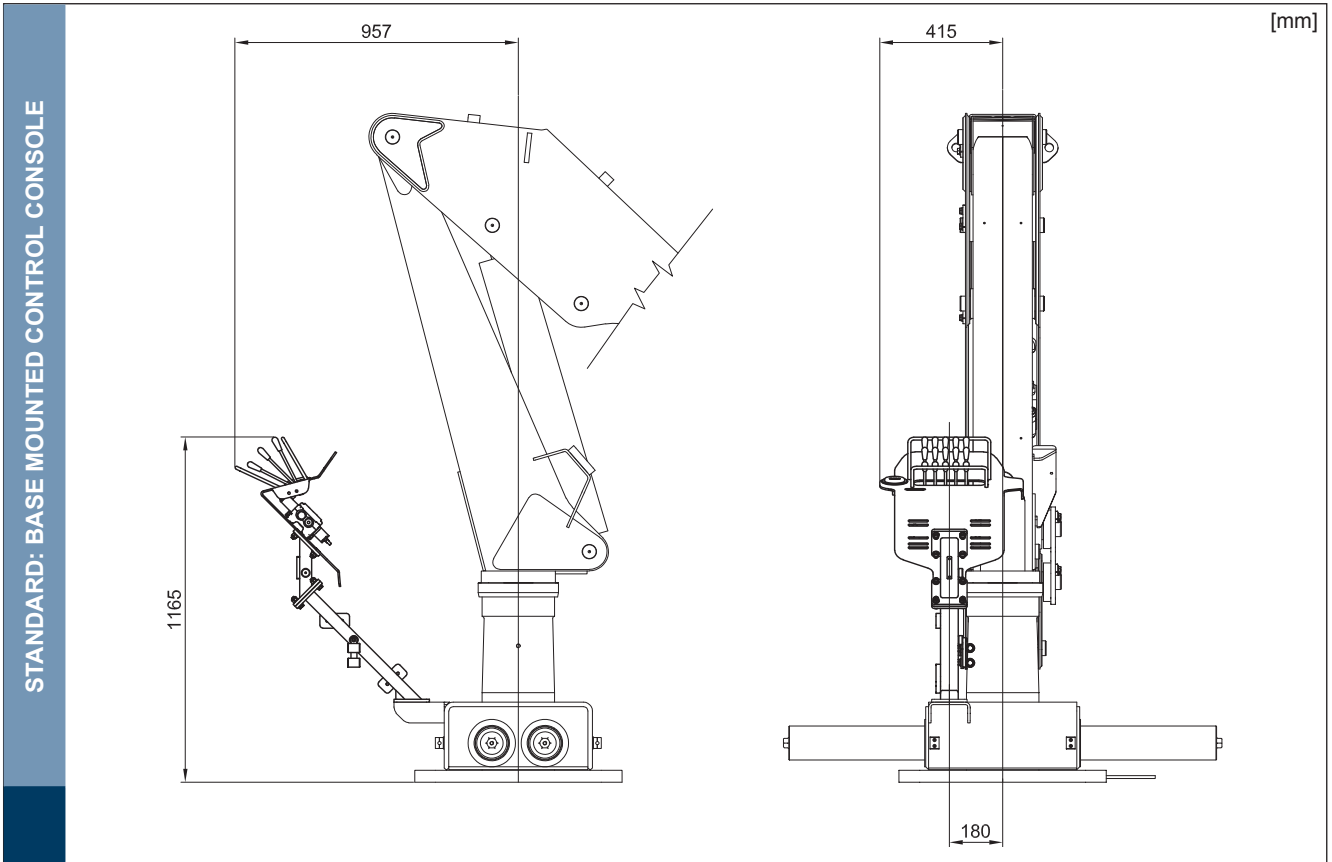


Custom Built Marine & Offshore Cranes

FOLDABLE CRANE

HLM 10-3S MODEL

Control position



Technical data are indicative and may change without notice, production tolerance have to be taken in to account. 2019 March | 861202-00



Custom Built Marine & Offshore Cranes

FOLDABLE CRANE

HLM 10-3S **MODEL**

STANDARD DEAD SPOT

[mm]

